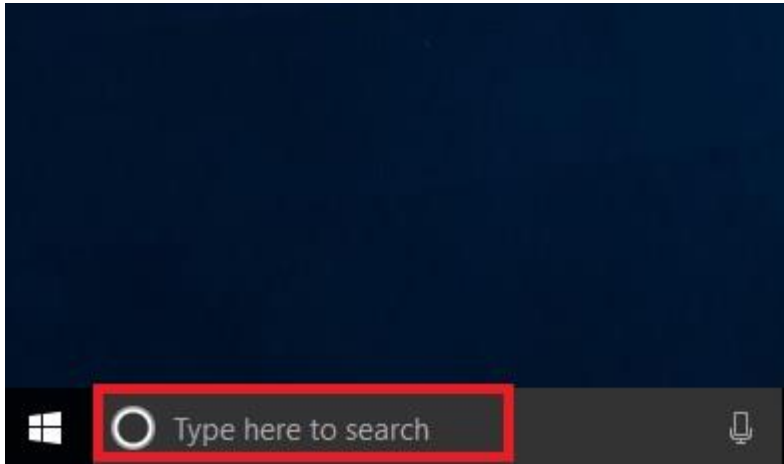


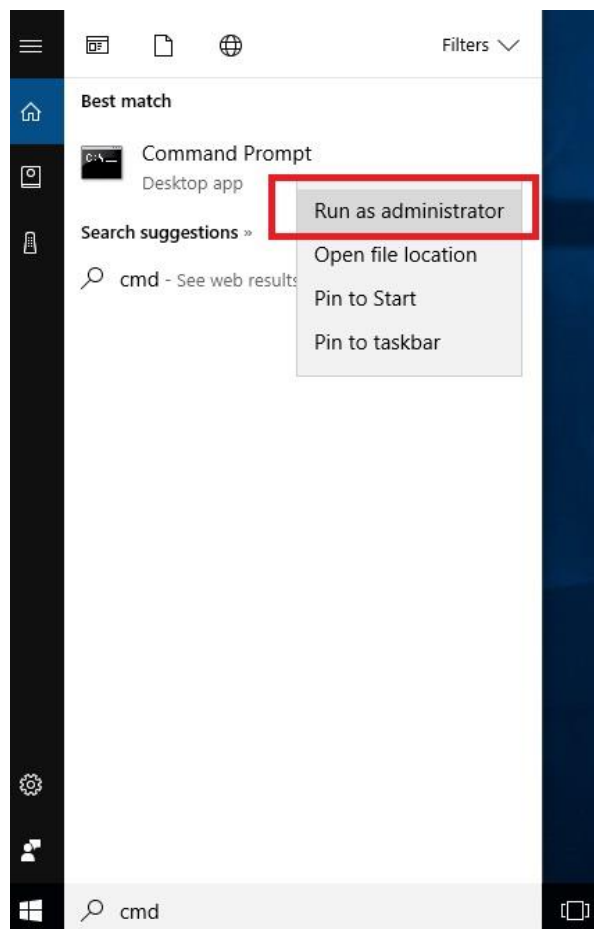
Windows Flash Utility SOP

v1.5

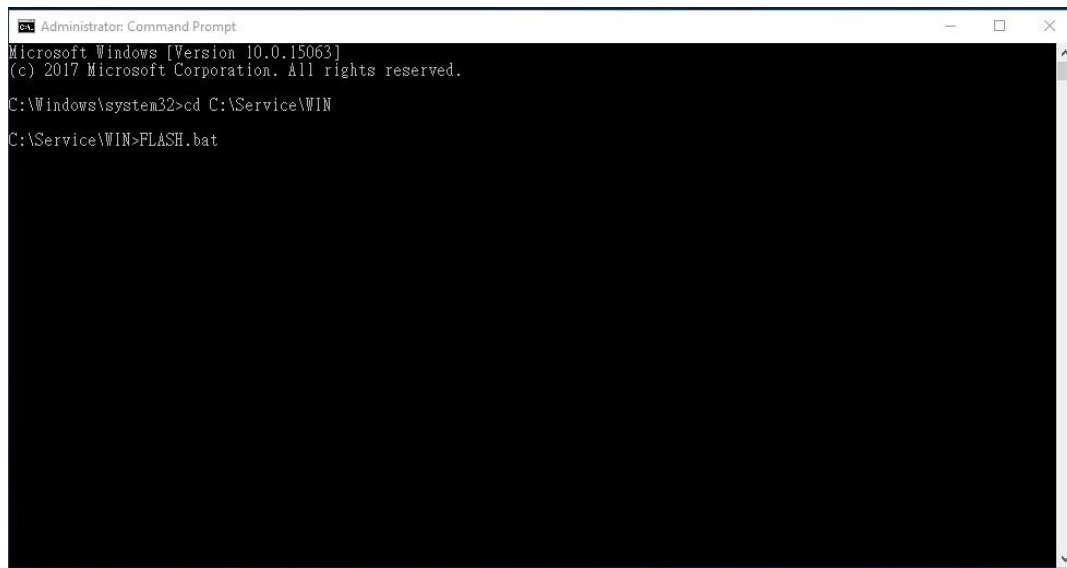
1. The lower left corner of the screen, scan windows



2. Type CMD
3. Mouse pointer Command Prompt, Then Click mouse Right button
4. Click mouse left button run "Run as Administrator"



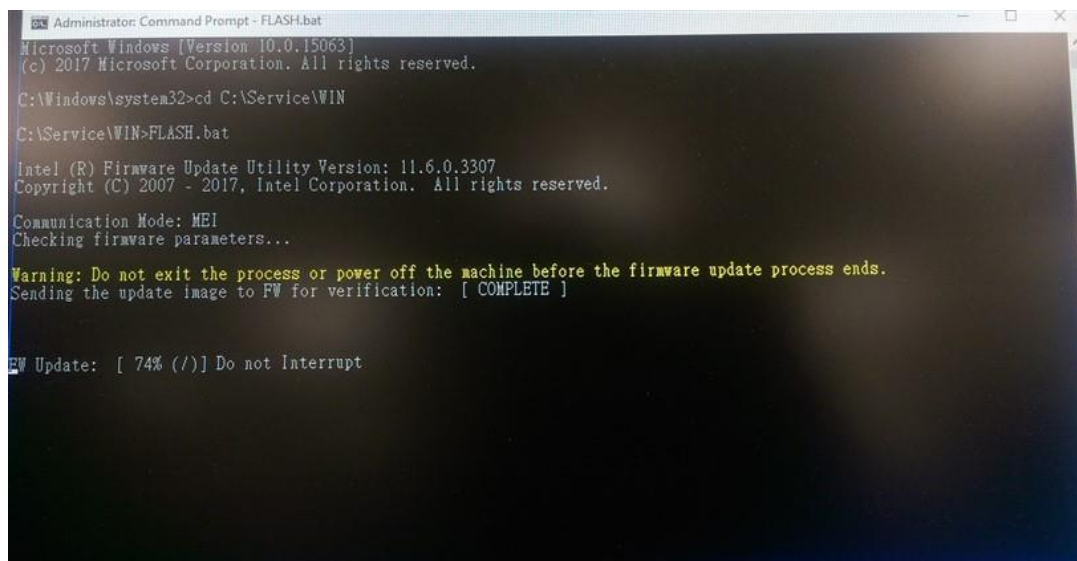
5. Use Type “CD” “Your package folder name” into WIN folder



```
Administrator: Command Prompt
Microsoft Windows [Version 10.0.15063]
(c) 2017 Microsoft Corporation. All rights reserved.

C:\Windows\system32>cd C:\Service\WIN
C:\Service\WIN>FLASH.bat
```

6. Type flash.bat, and use it to flash the ROMs.



```
Administrator: Command Prompt - FLASH.bat
Microsoft Windows [Version 10.0.15063]
(c) 2017 Microsoft Corporation. All rights reserved.

C:\Windows\system32>cd C:\Service\WIN
C:\Service\WIN>FLASH.bat

Intel (R) Firmware Update Utility Version: 11.6.0.3307
Copyright (C) 2007 - 2017, Intel Corporation. All rights reserved.

Communication Mode: MEI
Checking firmware parameters...

Warning: Do not exit the process or power off the machine before the firmware update process ends.
Sending the update image to FW for verification: [ COMPLETE ]

FW Update: [ 74% (/)] Do not Interrupt
```

7. After step 6, we will see the following actions.

```
Administrator: Command Prompt - FLASH.bat
Microsoft Windows [Version 10.0.15063]
(c) 2017 Microsoft Corporation. All rights reserved.

C:\Windows\system32>cd C:\Service\WIN
C:\Service\WIN>FLASH.bat

Intel (R) Firmware Update Utility Version: 11.6.0.3307
Copyright (C) 2007 - 2017, Intel Corporation. All rights reserved.

Communication Mode: MBI
Checking firmware parameters...

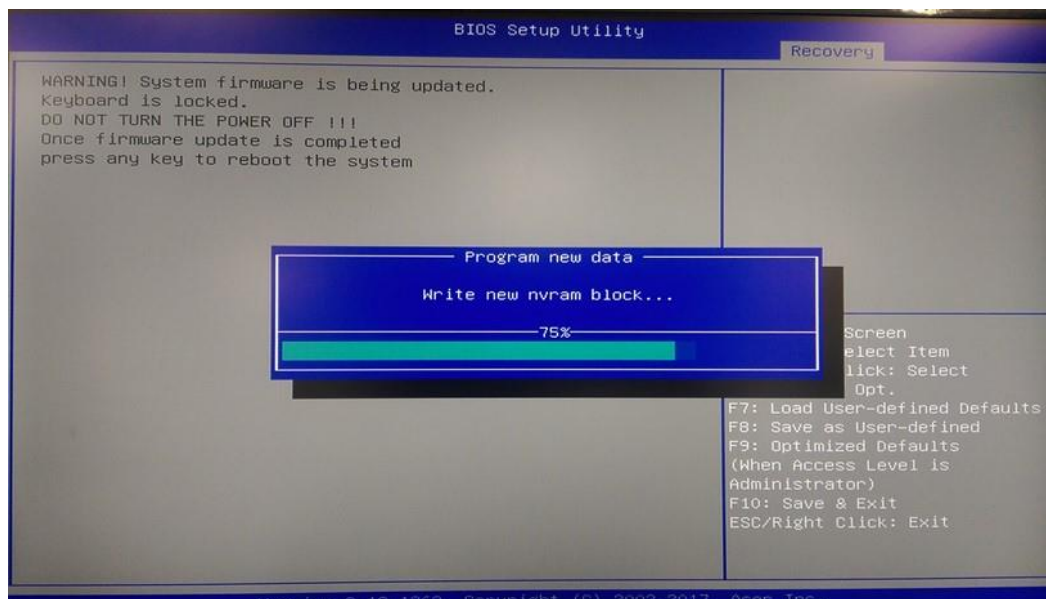
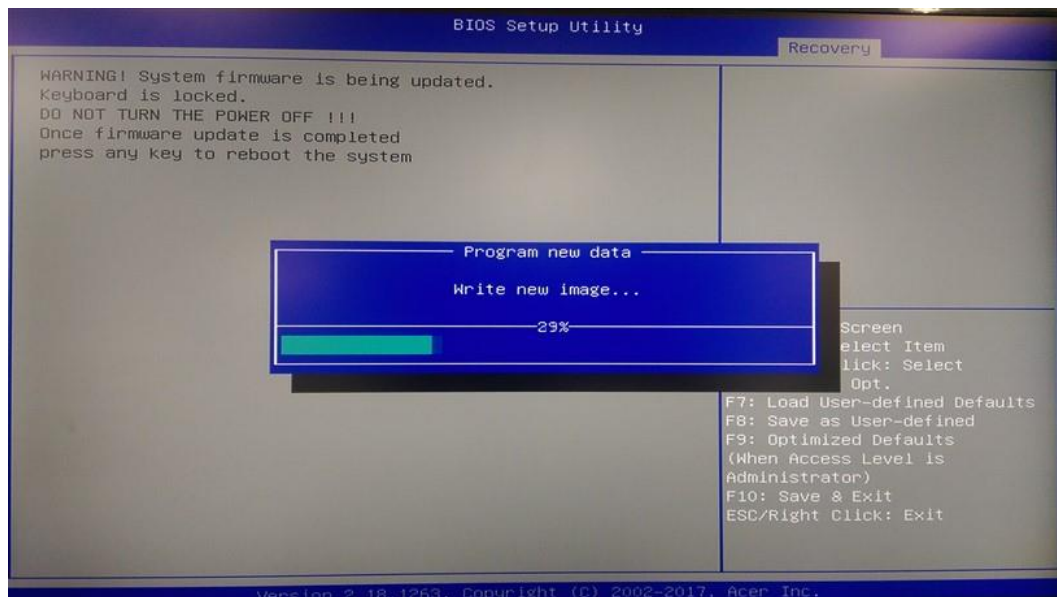
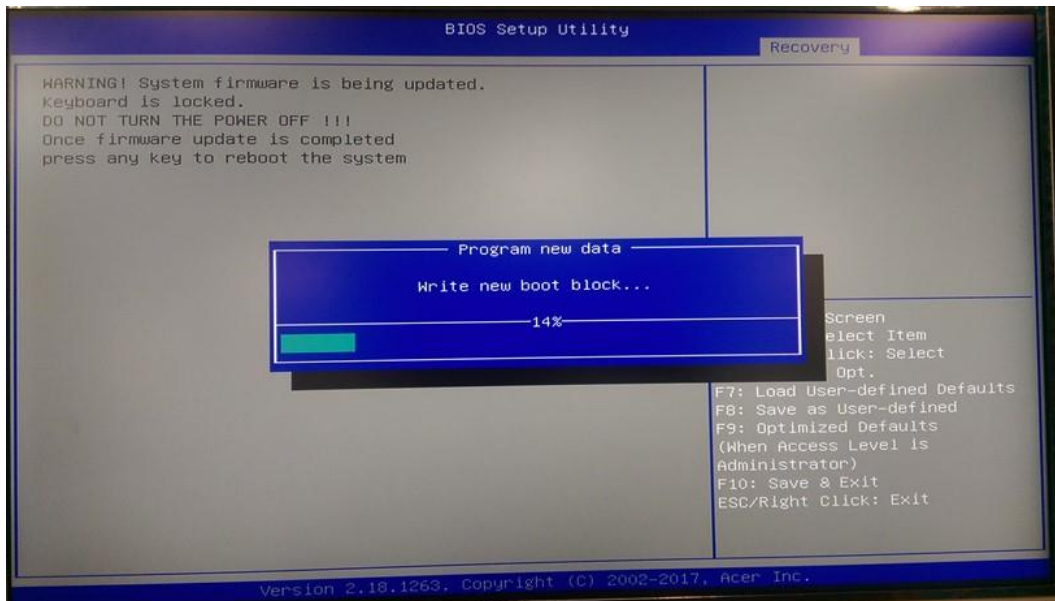
Warning: Do not exit the process or power off the machine before the firmware update process ends.
Sending the update image to FW for verification: [ COMPLETE ]

FW Update: [ 100% (/)]Do not Interrupt
FW Update is completed successfully.

-----+
|               AMI Firmware Update Utility v5.09.01.1317               |
|               Copyright (C)2017 American Megatrends Inc. All Rights Reserved.               |
|-----+-----|
```

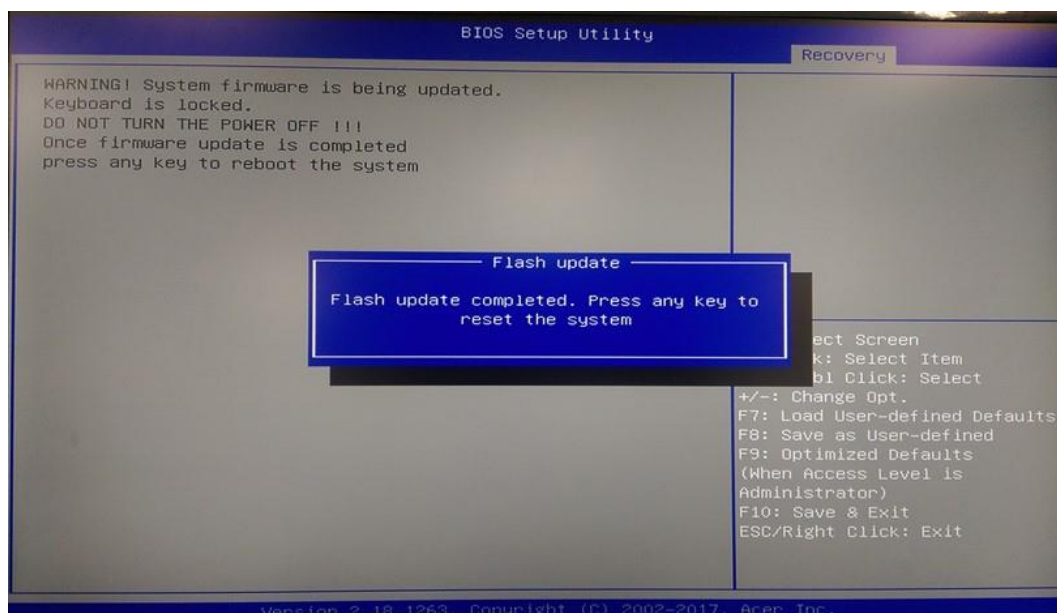
8. Wait Afuwin Tools load BIOS,Then System Auto Power off
9. System Auto Power on into BIOS “Recovery”
10. Press “Proceed with flash update” start recovery.







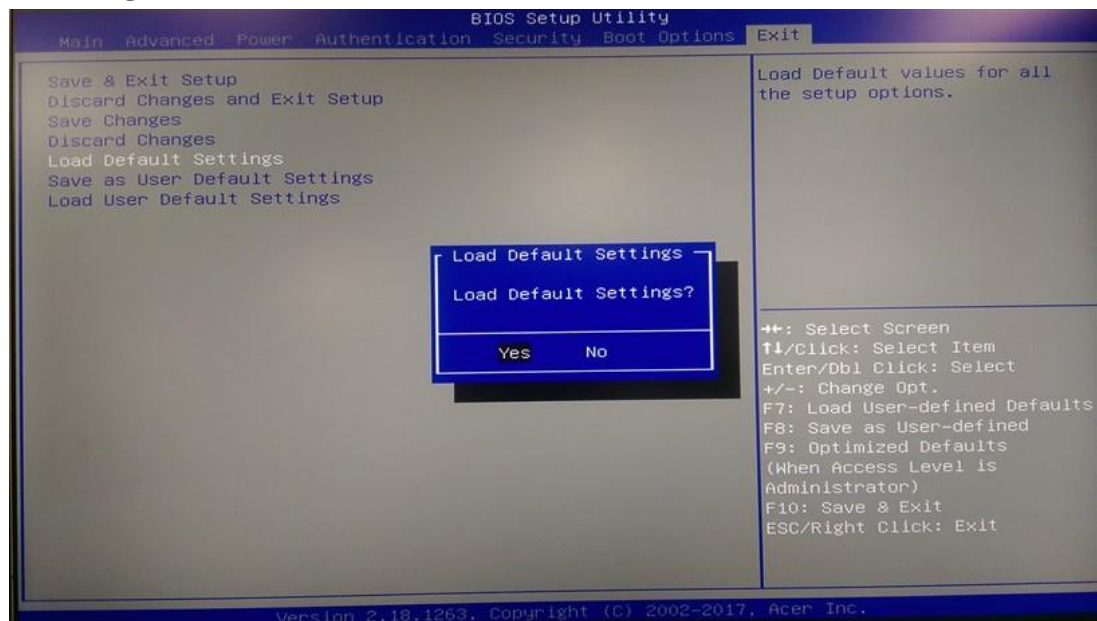
Wait it completed.



11. Press any key to reboot the system. (Recovery completed).

12. Boot system. Please press “Delete” to enter BIOS Setup Menu.

13. Select “Load Default Setting” and press “Enter”. Select “Yes” to load default settings.



14. Select “Save & Exit Setup” and press “Enter”.

15. Select “Yes” to restart.

