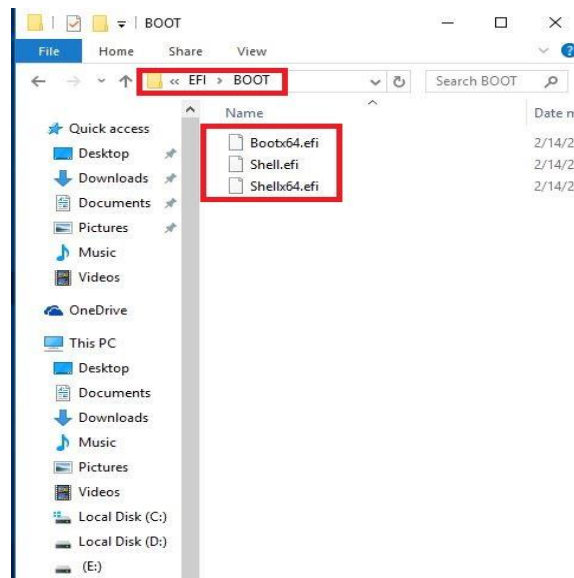


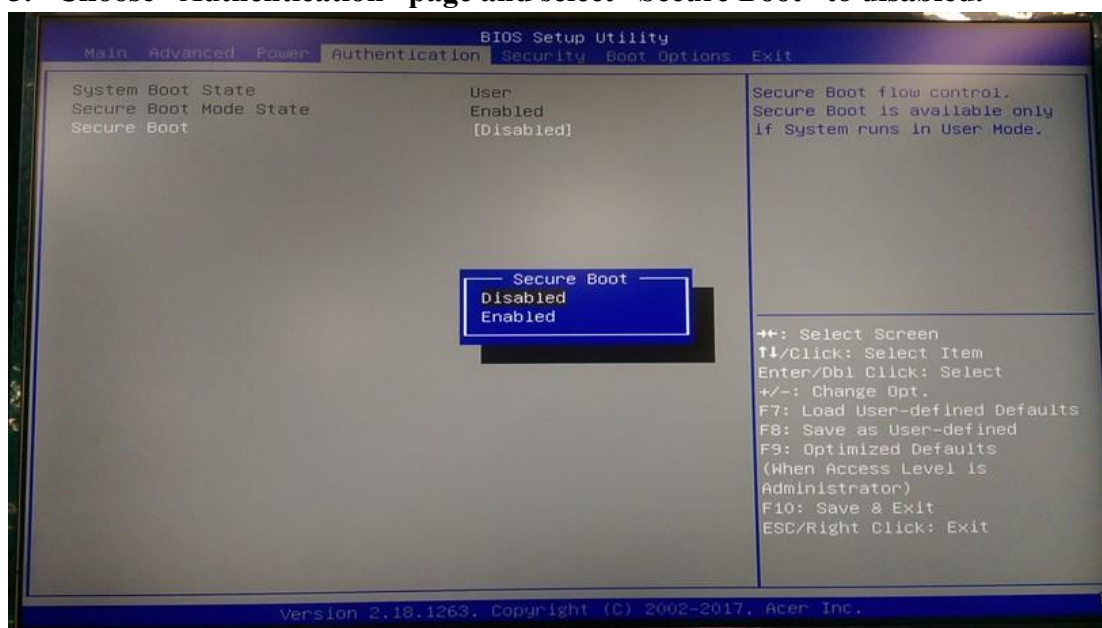
EFI Flash SOP

v1.6

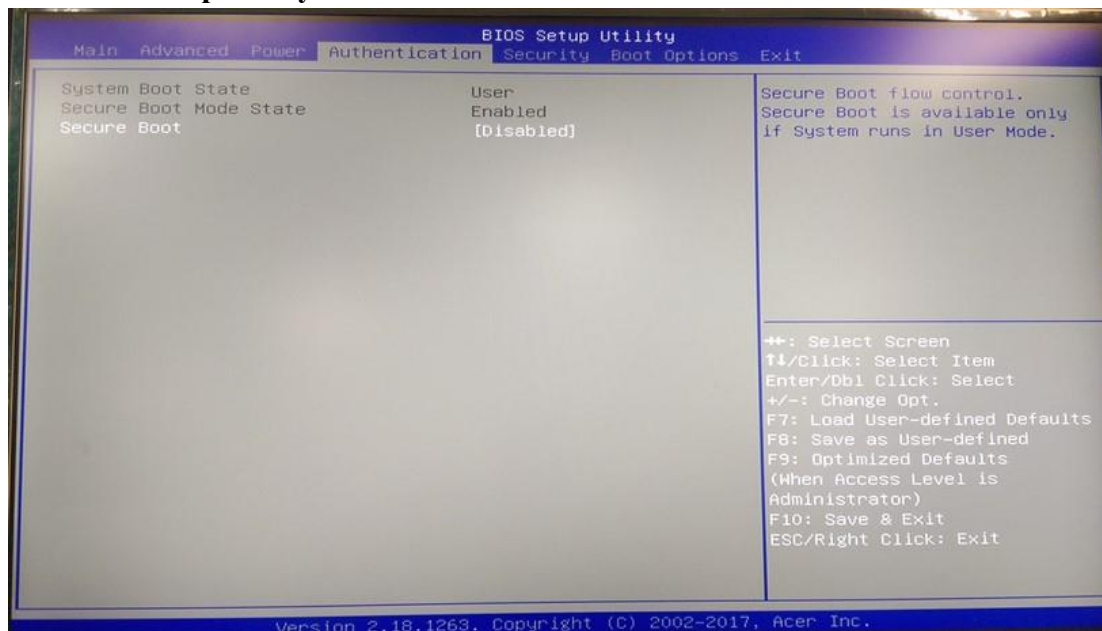
1. Please put the EFI shell relating file to a USB thumbdrive and the file path need to be follow as below. (E:\EFI\BOOT, E: is an example. Please check the path of your USB thumbdrive) –This is for EFI bootable device.



2. Power on the system. When you see the LOGO or hear one short beep, please press “Delete” to enter BIOS Setup Utility.
3. Choose “Authentication” page and select “Secure Boot” to disabled.



4. BIOS Setup Utility will disable “Secure Boot”

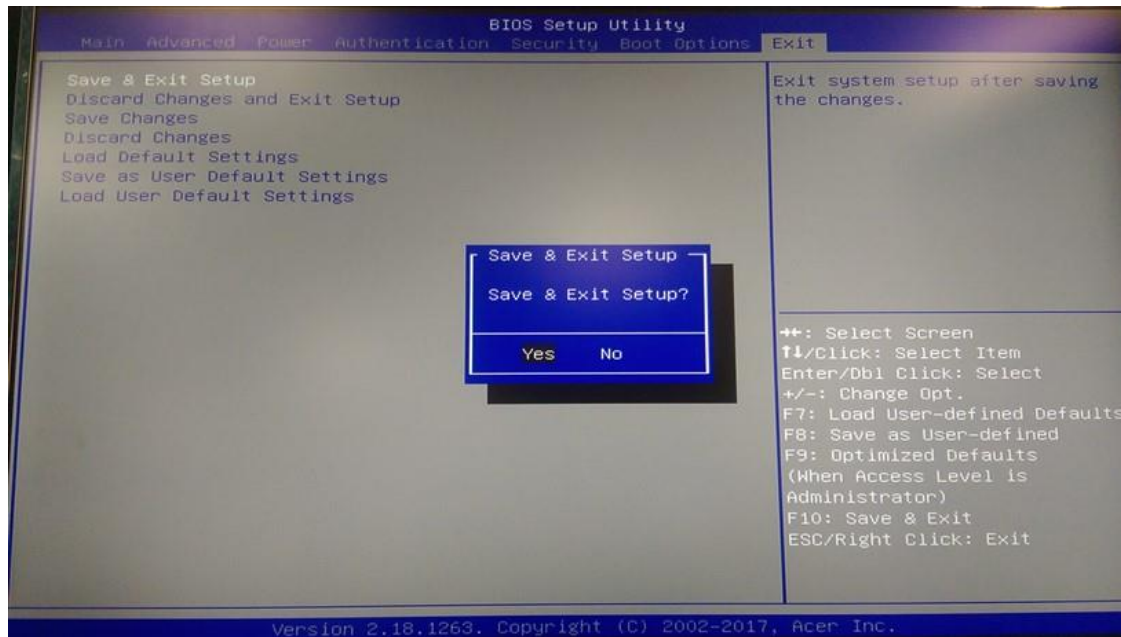


5. Choose “Boot Options” page and select “Boot Menu” to Enabled.



6. Choose “Exit” page and select “Save & Exit Setup” and press “Enter”.

7. Select “Yes” to restart.

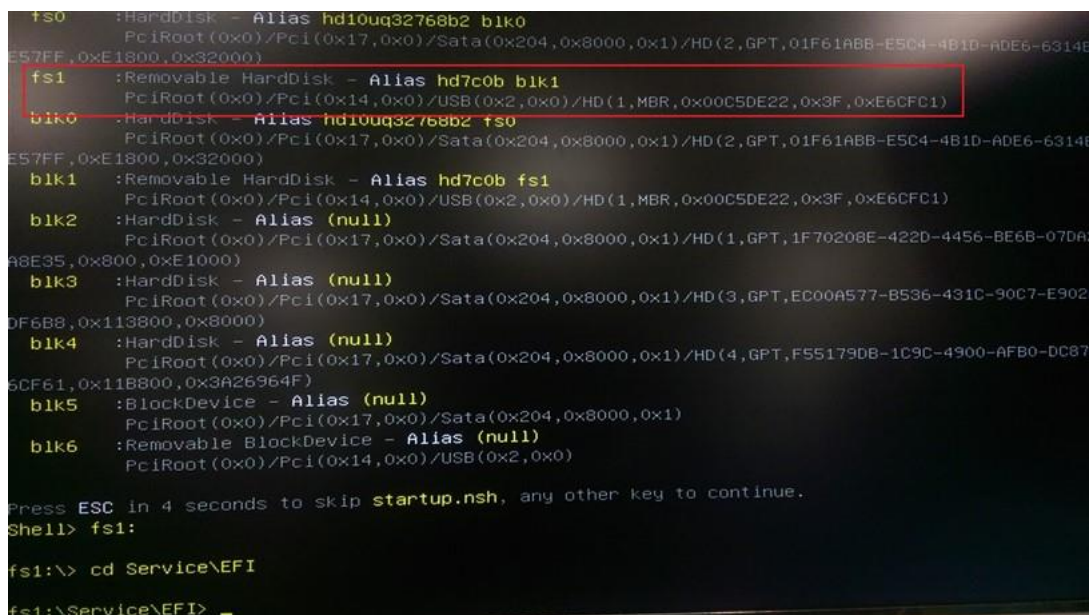


8. Press hot key F12 to enter Boot Menu, and select EFI USB thumbdrive.

9. Under the EFI system, and choose the Removable BlockDevice group
 (the Removable BlockDevice location is dynamic.)

E.g. In this figure, users should key in fs1: in Shell command line.

10. Use Type “CD” “Your package folder name” into EFI folder



11. Type flash.nsh, and use it to flash the ROMs.

```
fs0 :HardDisk - Alias hd7c0b blk0
PciRoot(0x0)/Pci(0x17,0x0)/Sata(0x204,0x8000,0x1)/HD(2,GPT,01F61ABB-E5C4-4B1D-ADE6-E57FF,0xE1800,0x32000)
fs1 :Removable HardDisk - Alias hd7c0b blk1
PciRoot(0x0)/Pci(0x14,0x0)/USB(0x2,0x0)/HD(1,MBR,0x00C5DE22,0x3F,0xE6CFC1)
blk0 :HardDisk - Alias hd10uq32768b2 fs0
PciRoot(0x0)/Pci(0x17,0x0)/Sata(0x204,0x8000,0x1)/HD(2,GPT,01F61ABB-E5C4-4B1D-ADE6-E57FF,0xE1800,0x32000)
blk1 :Removable HardDisk - Alias hd7c0b fs1
PciRoot(0x0)/Pci(0x14,0x0)/USB(0x2,0x0)/HD(1,MBR,0x00C5DE22,0x3F,0xE6CFC1)
blk2 :HardDisk - Alias (null)
PciRoot(0x0)/Pci(0x17,0x0)/Sata(0x204,0x8000,0x1)/HD(1,GPT,1F70208E-422D-4456-BE6B-0A8E35,0x800,0xE1000)
blk3 :HardDisk - Alias (null)
PciRoot(0x0)/Pci(0x17,0x0)/Sata(0x204,0x8000,0x1)/HD(3,GPT,EC00A577-B536-431C-90C7-E9030F6B8,0x113800,0x8000)
blk4 :HardDisk - Alias (null)
PciRoot(0x0)/Pci(0x17,0x0)/Sata(0x204,0x8000,0x1)/HD(4,GPT,F55179DB-1C9C-4900-AFB0-DC816CF61,0x11B800,0x3A26964F)
blk5 :BlockDevice - Alias (null)
PciRoot(0x0)/Pci(0x17,0x0)/Sata(0x204,0x8000,0x1)
blk6 :Removable BlockDevice - Alias (null)
PciRoot(0x0)/Pci(0x14,0x0)/USB(0x2,0x0)

Press ESC in 4 seconds to skip startup.nsh, any other key to continue.
Shell> fs1:

fs1:\> cd Service\EFI

fs1:\Service\EFI> FLASH.nsh
```

12. After step 11, we will see the following actions.

```
blk4 :HardDisk - Alias (null)
PciRoot(0x0)/Pci(0x17,0x0)/Sata(0x204,0x8000,0x1)/HD(3,GPT,EC00A577-B536-431C-90C7-E9030F6B8,0x113800,0x8000)
blk5 :BlockDevice - Alias (null)
PciRoot(0x0)/Pci(0x17,0x0)/Sata(0x204,0x8000,0x1)
blk6 :Removable BlockDevice - Alias (null)
PciRoot(0x0)/Pci(0x14,0x0)/USB(0x2,0x0)

Press ESC in 4 seconds to skip startup.nsh, any other key to continue.
Shell> fs1:

fs1:\> cd Service\EFI

fs1:\Service\EFI> FLASH.nsh
FLASH.nsh> FWUpdLcl.efi -F ..\ROM\MEFW.bin -allowsv

Intel (R) Firmware Update Utility Version: 11.6.0.3307
Copyright (C) 2007 - 2017, Intel Corporation. All rights reserved.

Communication Mode: MEI
Checking firmware parameters...

Warning: Do not exit the process or power off the machine before the firmware update process ends
Sending the update image to FW for verification: [ COMPLETE ]

FW Update: [ 36% (/)] Do not Interrupt
```

```
blk6 :Removable BlockDevice - Alias (null)
      PciRoot(0x0)/Pci(0x14,0x0)/USB(0x2,0x0)

Press ESC in 4 seconds to skip startup.nsh, any other key to continue.
Shell> fs1:

fs1:\> cd Service\EFI

fs1:\Service\EFI> FLASH.nsh
FLASH.nsh> FWUpdLc1.efi -F ..\ROM\MEFW.bin -allowsv

Intel (R) Firmware Update Utility Version: 11.6.0.3307
Copyright (C) 2007 - 2017, Intel Corporation. All rights reserved.

Communication Mode: MEI
Checking firmware parameters...

Warning: Do not exit the process or power off the machine before the firmware update process ends
Sending the update image to FW for verification: [ COMPLETE ]

FW Update: [ 100% (-)]Do not Interrupt
FW Update is completed successfully.
FLASH.nsh> AfuEfix64 ..\ROM\D01.cap /P /B /N /R /Capsule /Q

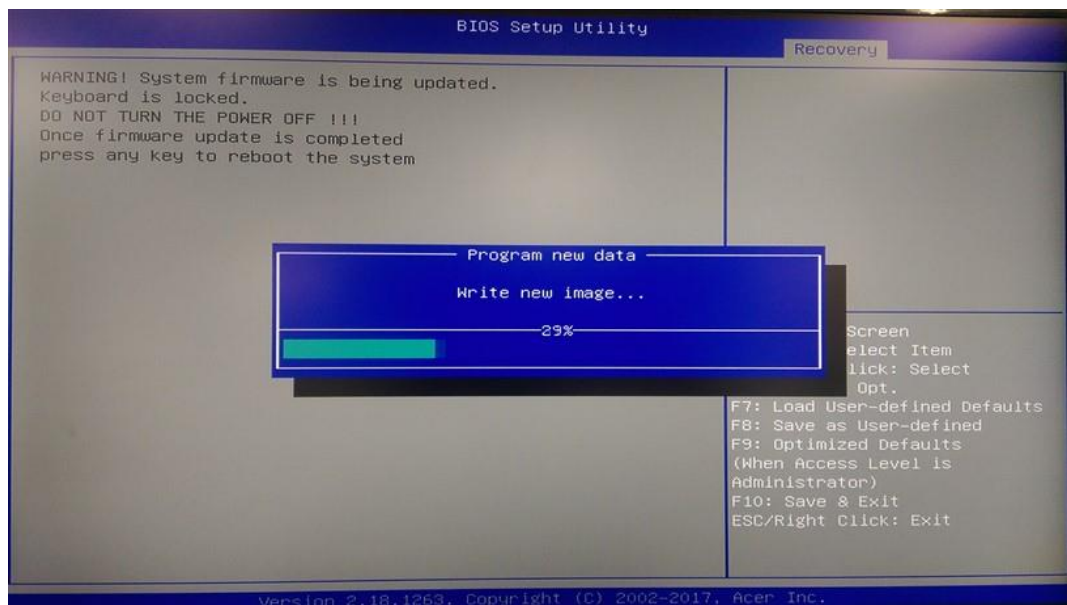
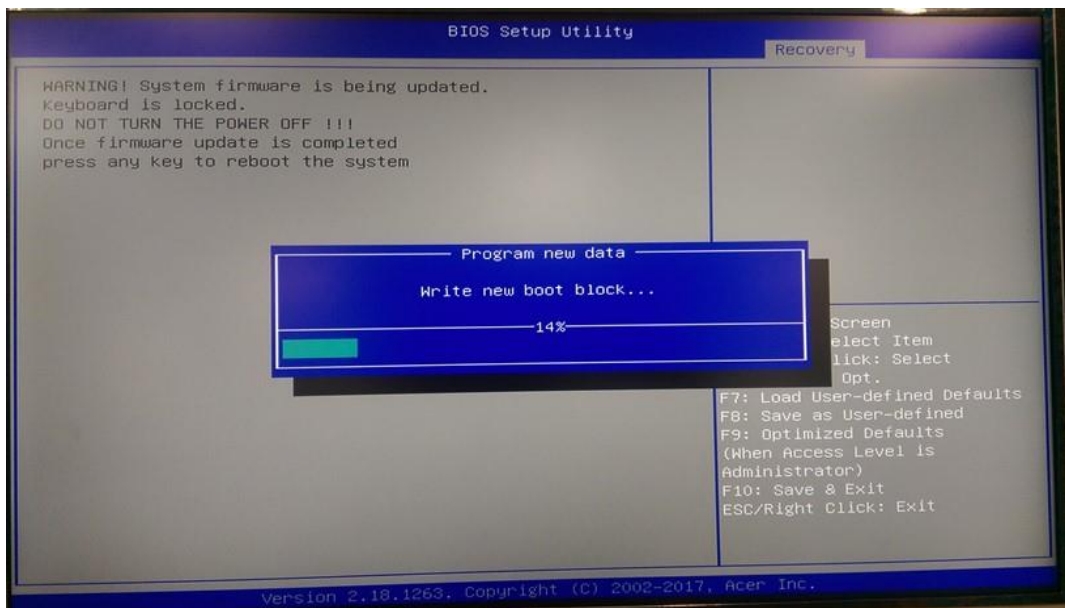
-----+
|          AMI Firmware Update Utility v5.09.01.1317          |
| Copyright (C)2017 American Megatrends Inc. All Rights Reserved. |
|-----+-----+-----+-----+-----+-----+-----+-----+
|
```

13. Wait Afu Tools load BIOS,Then Auto Power off

14. System Auto Power on into BIOS “Recovery”

15. Press “Proceed with flash update” start recovery.







Wait it completed.



- 16. Press any key to reboot the system. (Recovery completed).**
- 17. Boot system. Please press “Delete” to enter BIOS Setup Menu.**
- 18. Select “Load Default Setting” and press “Enter”. Select “Yes” to load default settings.**



19. Select “Save & Exit Setup” and press “Enter”.

20. Select “Yes” to restart.

